

Department of
Neuropsychology & Psychopharmacology

“Face book”
2024-2025



Stephanie Ashton, MSc

Division: PhD candidate Neuropsychology + Psychopharmacology

Location: UNS 40 Room 2.759

Email: s.ashton@maastrichtuniversity.nl

Keywords research/expertise: Memory control, intrusive thoughts, stress, EEG



Dr. Ryszard Auksztulewicz

Division: Neuropsychology + Psychopharmacology

Location: UNS 40 Room 2.738

Email: ryszard.auksztulewicz@maastrichtuniversity.nl

Keywords research/expertise: Cognitive neuroscience (prediction, attention, memory, learning), computational neuroscience (effective connectivity, decoding), EEG, fMRI



Dr. Arjan Blokland

Division: Psychopharmacology

Location: UNS 40 Room 2.731

E-mail: a.blokland@maastrichtuniversity.nl

Keywords research/ expertise:

(Neurobiology of) learning and memory, psychopharmacology, translational research, drug development, acetylcholine, serotonin, phosphodiesterase inhibitors



Dr. Tjeerd Boonstra

Division: Neuropsychology

Location: UNS 40 Room 2.741

E-mail: tjeerd.boonstra@maastrichtuniversity.nl

Keywords research/ expertise: mobile brain-body imaging (including mobile EEG), network analysis, motor control, posture, gait, movement disorders (Parkinson's disease, dystonia)



Dr. Jessica Bruijel

Division: Post doc, Neuropsychology

Location: UNS40 Room 2.778

E-mail: jessica.bruijel@maastrichtuniversity.nl

Keywords: Sleep, fatigue, acquired brain injury, adult neuropsychology



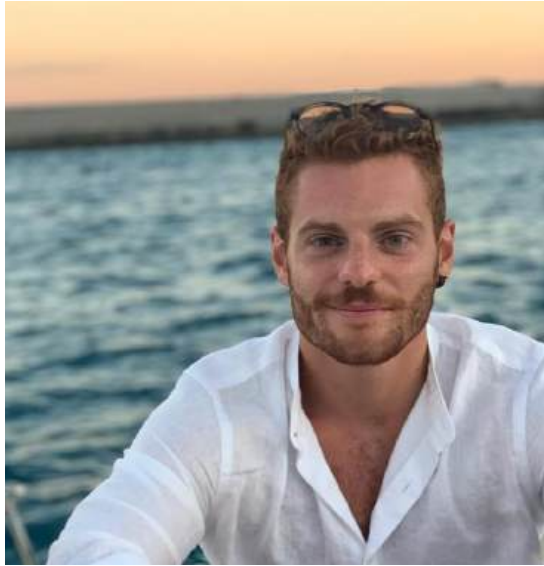
Mauro Cavarra

Division: Post doc, Psychopharmacology

Location: UNS40 Room 2.778

E-mail: m.cavarra@maastrichtuniversity.nl

Keywords: Psychedelics, psychedelic-assisted psychotherapy, chronic pain



Dr. Antonio Criscuolo

Division: Post doctoral researcher, section Neuropsychology

Location: UNS 40 Room 2.749

E-mail: a.criscuolo@maastrichtuniversity.nl

Keywords research/ expertise: time and rhythm processing, temporal predictions, music and speech processing, neural oscillations, EEG, MEG.



Suvarnalata Xanthate Duggirala, Mtech, MSc

Division: PhD candidate Neuropsychology

Location: UNS40 Room A5.765

E-mail: xanthate.duggirala@maastrichtuniversity.nl

Research Keywords: cognitive control, emotion, executive functioning, attentional bias, individual differences, psychosis, hallucination proneness, working memory.

Methods Keywords: fMRI, EEG, Behavioral study, Questionnaires.



Dr. Pim Heckman

Department: Neuropsychology / Psychopharmacology

Location: UNS 40 Room 2.741

E-mail: p.heckman@maastrichtuniversity.nl

Keywords research/ expertise: hippocampal and corticostriatal learning, memory function of sleep, pattern separation, role of dopamine in learning and motivation, neuroscience of action, sleep loss and cognition, cognition enhancement, neuropsychopharmacology, caring about my students as a supervisor

Projects:

- 1) The therapeutic potential of Neurexan to treat the negative consequences of acute and anticipated stress on object sleep quality measures (PSGs)
- 2) Restoring persistent accessibility to “lost” memories after sleep loss using non-invasive brain stimulation



Prof. dr. Caroline van Heugten

Division: Neuropsychology

Location: UNS 40 Room 2.736

E-mail: caroline.vanheugten@maastrichtuniversity.nl

Keywords research/ expertise:

acquired brain damage, coping, quality of life, neuropsychological rehabilitation and treatment, stroke



Hanna Honcamp, MSc

Division: PhD candidate, section Neuropsychology (NP)

Location: UNS 40 Room A2.765

Email: h.honcamp@maastrichtuniversity.nl

Keywords research/expertise: Hallucination proneness, Auditory Verbal Hallucinations (AVHs), EEG, resting state, temporal dynamics, computational modeling (Hidden Semi-Markov Modeling)



Dr. Petra Hurks

Division: Neuropsychology

Location: UNS 40 Room 2.747

E-mail: pm.hurks@maastrichtuniversity.nl

Keywords research/ expertise:

neuropsychological development (e.g., attention, verbal fluency, time estimation), individual differences, ADHD, developmental disorders



Dr. Esther Keulers

Division: Neuropsychology

Location: UNS 40 Room 2.747

E-mail: esther.keulers@maastrichtuniversity.nl

Keywords research/ expertise:

neuropsychological and socioemotional development, cognitive interventions, adolescence, brain development, ADHD and other developmental disorders



Prof. Dr. Sonja Kotz

Division: Neuropsychology, Head of Section Neuropsychology

Location: UNS 40 Room 2.742

E-mail: sonja.kotz@maastrichtuniversity.nl

Keywords research/ expertise: cognitive, affective & clinical neuroscience (stroke, neurodegeneration); specific foci across the lifespan: Social communication (integration verbal and non-verbal information); time perception; learning and neuroplasticity; motor, cognitive, affective control



Lilian Kloft, MSc

Division: assistant professor, Psychopharmacology

Location: UNS40 A2.778

E-mail: l.kloft@maastrichtuniversity.nl

Keywords research/ expertise: Psychopharmacology, Forensic Psychology, drugs and memory, cannabis, MDMA, false memories, eyewitness memory



Dr. Kim Kuypers

Division: Psychopharmacology

Location: UNS 40 Room A2.743

E-mail: fpn-pim1internships@maastrichtuniversity.nl

Keywords research/ expertise: Psychedelics, microdosing, mental wellbeing, empathy, social and stress hormones



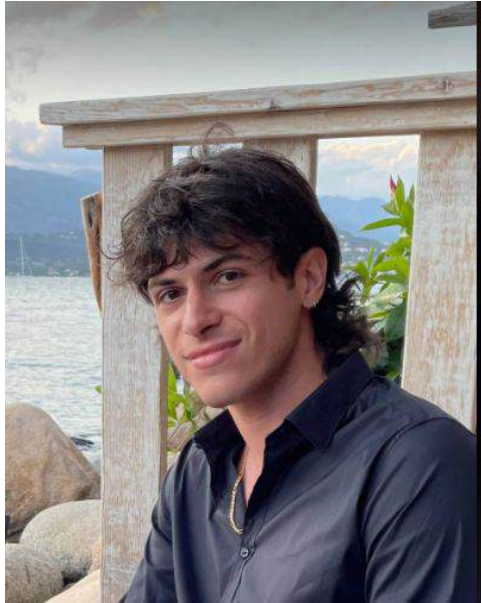
Katharina Lege, MSc

Division: Psychopharmacology

Location: UNS 40 Room A2.753

E-mail: katharina.lege@maastrichtuniversity.nl

Keywords research/ expertise: Cannabinoids, Neuroimaging/fMRI



Pablo Mallaroni

Division: PhD candidate, section Neuropsychopharmacology

Location: UNS 40 Room 2.735

E-mail: p.mallaroni@maastrichtuniversity.nl

Keywords research/ expertise: psychedelics, fMRI, novel psychoactives, affective processing, supervised classifiers



Dr. C. Rob Markus

Division: Psychopharmacology

Location: UNS 40 Room 2.754

E-mail: r.markus@maastrichtuniversity.nl

Keywords research/expertise:

- Gene by Cognition interaction in stress-related disorders (depression, sleep, eating, stress-responsiveness); brain serotonin (5-HT)
- Psycho-physiology/neuroendocrinology of stress and affective disorders
- Genes, stress and food-reward, eating behaviour
- Brain nutraceutical processes ((functional-)food, brain, and behaviour)



Marilien Marzolla, MSc

Division: PhD candidate, Section Neuropsychology

Location: UNS40 Room A2.753

E-mail: m.marzolla@maastrichtuniversity.nl

Research Keywords: sensory processing, sensory hypersensitivity, traumatic brain injury in adults and children, individual differences.



Dr. Natasha Mason

Division: Psychopharmacology

Location: UNS 40 Room A2.778

E-mail: natasha.mason@maastrichtuniversity.nl ; for internships please email: fpn-pim1internships@maastrichtuniversity.nl

Keywords research/ expertise: Psychedelics, cannabis, neuroadaptations, creativity, empathy, fMRI, Magnetic resonance spectroscopy, social cognition



Dr. Conny Quaedflieg

Division: Neuropsychology / Psychopharmacology

Location: UNS 40 Room 2.741

E-mail: conny.quaedflieg@maastrichtuniversity.nl

Keywords research/ expertise: Memory control; Intentional fear control; Goal-directed & habitual behaviour; EEG - Electroencephalography; MEG-Magnetoencephalography; Stress; psychopharmacology / The role of the brain in stress resilience; Effects of stress timing on memory and learning



Prof. dr. Jan Ramaekers

Division: Psychopharmacology

Location: UNS 40 Room 2.732

E-mail: j.ramaekers@maastrichtuniversity.nl

Keywords research/ expertise:

psychopharmacology, addiction, drugs of abuse, impulse control, human drug trials, human performance, behavioral toxicology, drugs and driving, traffic psychology



Johannes Reckweg

Division: Psychopharmacology

Location: UNS 40 Room A2.749

E-mail: johannes.reckweg@maastrichtuniversity.nl

Keywords research/ expertise: Psychedelics, 5-MeO-DMT, depression, clinical trials, Phase 1/2 studies



Dr. Christine Resch

Division: Neuropsychology

Location: UNS 40 Room 2.759

E-mail: christine.resch@maastrichtuniversity.nl

Keywords research/ expertise: pediatric acquired brain injury, neuropsychological rehabilitation, child and adolescent neuropsychology, cognitive development, cognitive interventions



Dr. Peter van Ruitenbeek

Division: Psychopharmacology

Location: UNS 40 Room 2.755

E-mail: p.vanruitenbeek@maastrichtuniversity.nl

Keywords research/ expertise: Learning and memory, executive functions, psychopharmacology (histamine, dopamine), brain mechanisms in addiction, cognitive processes in addiction, acute stress, neuroimaging (MRI)



Dr. Michael Schwartz

Division: Neuropsychology

Location: UNS 40 Room 2.738

E-mail: michael.schwartz@maastrichtuniversity.nl

Keywords research/ expertise:

- EEG
- Temporal processing in healthy and patient populations
- Sensorimotor synchronization and predictive adaptation
- Dynamic allocation of attention in time
- Speech perception and production



Dr. Peter Stiers

Division: Neuropsychology / Psychopharmacology

Location: UNS 40 Room 2.755

E-mail: peter.stiers@maastrichtuniversity.nl

Keywords research/ expertise:

developmental neuropsychology, cerebral visual impairment, structural and functional magnetic resonance imaging, prefrontal cortical, organisation in relation to cognitive performance, inter-individual variability in cortical organisation



Dr. Eef Theunissen

Division: Psychopharmacology

Location: UNS 40 Room 2.743

E-mail: e.theunissen@maastrichtuniversity.nl

Keywords research/ expertise:

Psychopharmacology, drugs and driving, cannabis and cognition



Dr. Ieke Winkens

Division: Neuropsychology

Location: UNS 40 Room 2.761

E-mail: i.winkens@maastrichtuniversity.nl

Keywords research/ expertise: neuropsychological rehabilitation and treatment, acquired brain injury, adults